

SATELLITE-IDENTIFIED IDP CONCENTRATIONS, ROAD & BRIDGE OBSTACLES IN CENTRAL PORT-AU-PRINCE, HAITI (UPDATE 1)

Operational Analysis with GeoEYE-1 Data Acquired 13 January 2010 and QuickBird data acquired 4 March 2008

This work was done in support of the international humanitarian relief effort in Haiti following the earthquake on 12 January 2010. Informal IDP sites, bridges and road obstacles have been identified in GeoEye-1 imagery recorded on 13 January 2010. This is a preliminary analysis & has not yet been validated in the field. Road and bridge damages have likely been underestimated. Please send ground feedback to UNITAR / UNOSAT.

Earthquake
7.0M

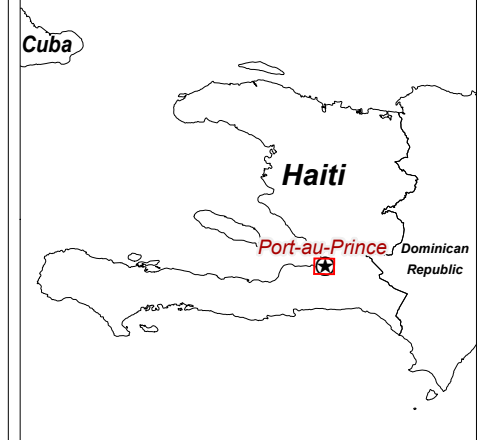
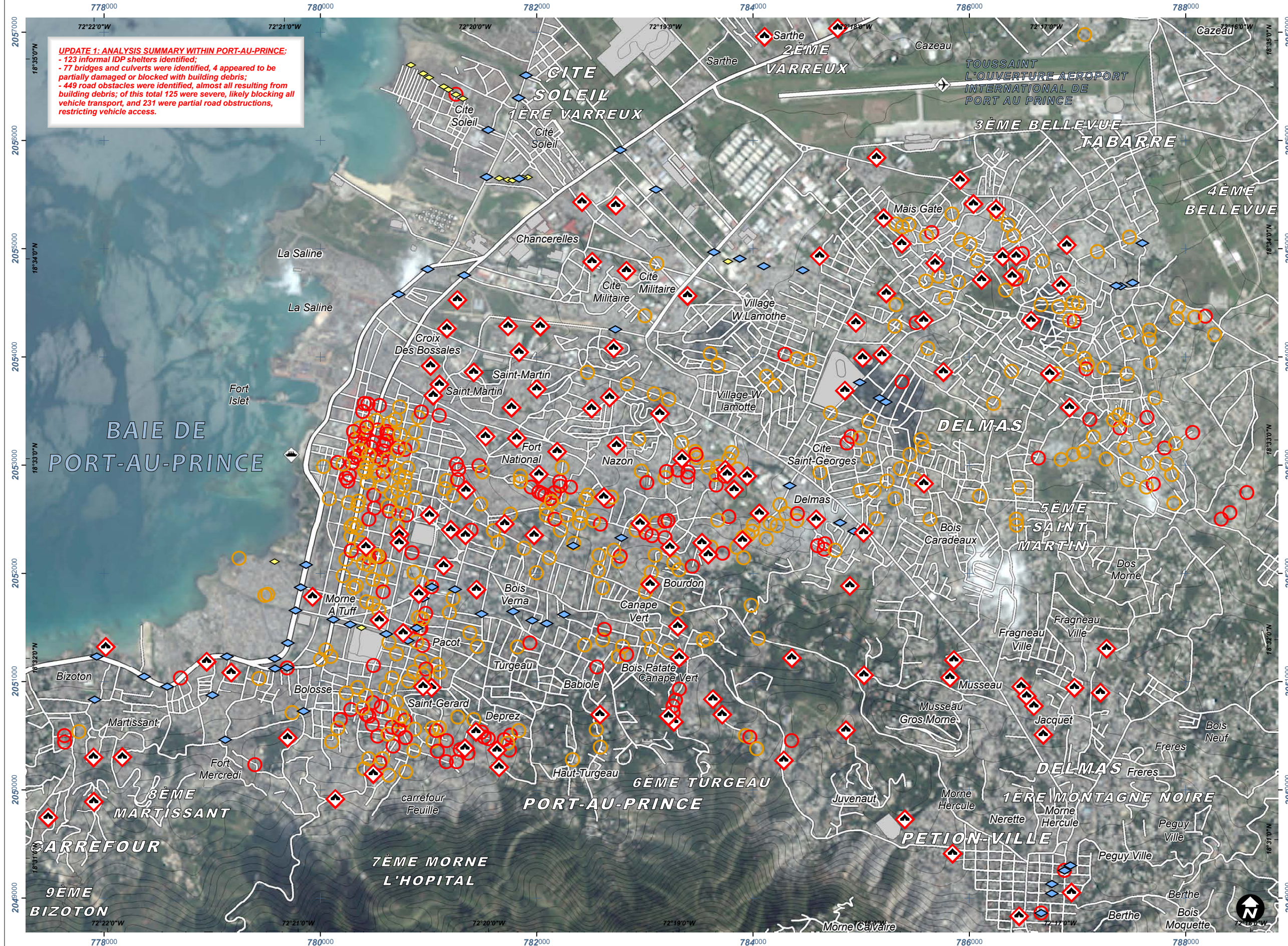


15 January 2010
(19:00:00 UTC)

Version 2.0

Glide No:
EQ-2010-000009-HTI

UPDATE 1: ANALYSIS SUMMARY WITHIN PORT-AU-PRINCE:
 - 123 informal IDP shelters identified;
 - 77 bridges and culverts were identified, 4 appeared to be partially damaged or blocked with building debris;
 - 449 road obstacles were identified, almost all resulting from building debris; of this total 125 were severe, likely blocking all vehicle transport, and 231 were partial road obstructions, restricting vehicle access.



Legend

- Likely Informal IDP Site
- Bridge & Road Obstacles Probable Operational Status
- Likely Closed by Debris
- Likely Restricted by Debris
- Airfield
- Port
- Bridge
- Culvert
- Foot Bridge
- Primary Road
- Secondary / Urban Road
- Unpaved / Minor rd
- Railroad

Map Scale for A3: 1:35,000
 UTM grid coordinates given in 1/2km intervals
 Elevation contour lines in 20 meter intervals
 Background satellite imagery WV2 9Jan2010 (DigitalGlobe)

Satellite Data (1)	GeoEye-1
Imagery Dates	13 January 2010
Resolution	50cm
Copyright	GeoEye 2009
Satellite Data (2)	QuickBird-2
Imagery Date	4 March 2008
Copyright	DigitalGlobe
Source	Google Earth
Road Data	Open Street Map
Place Names	Google Map Maker
Other Data	MINUSTAH, USGS, NGA
Elevation Data	ASTER GDEM
Source	METI & NASA 2009
Analysis	UNITAR / UNOSAT
Map Production	UNITAR / UNOSAT
Projection	UTM Zone 18 North
Datum	WGS-84 (EGM-96)

Map Data © 2009 Google - Improve with Google Map Maker
 The depiction and use of boundaries, geographic names and related data shown here are not warranted to be error-free nor do they imply official endorsement or acceptance by the United Nations. UNOSAT is a program of the United Nations Institute for Training and Research (UNITAR), providing satellite imagery and related geographic information, research and analysis to UN humanitarian & development agencies & their implementing partners.

UNOSAT
 Contact Information: unosat@unitar.org
 24/7 Hotline: +41 76 487 4998
www.unosat.org