

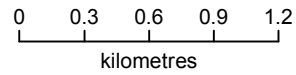


MapAction

# Haiti: Location of IDP Camps Mapped at 22nd Jan 2010

Map shows the locations of IDP camps which have been mapped on 22 Jan 2010.

Many camps still not been position due to vagaries of descriptive locational text



Scale 1:35,000 at A3 size

Created 22 Jan 2010 / 21:00  
Document MA102\_hti\_IDP\_21Jan\_A3\_v3  
Projection / datum Geographic / WGS84  
GLIDE Number EQ-2010-000009-HTI

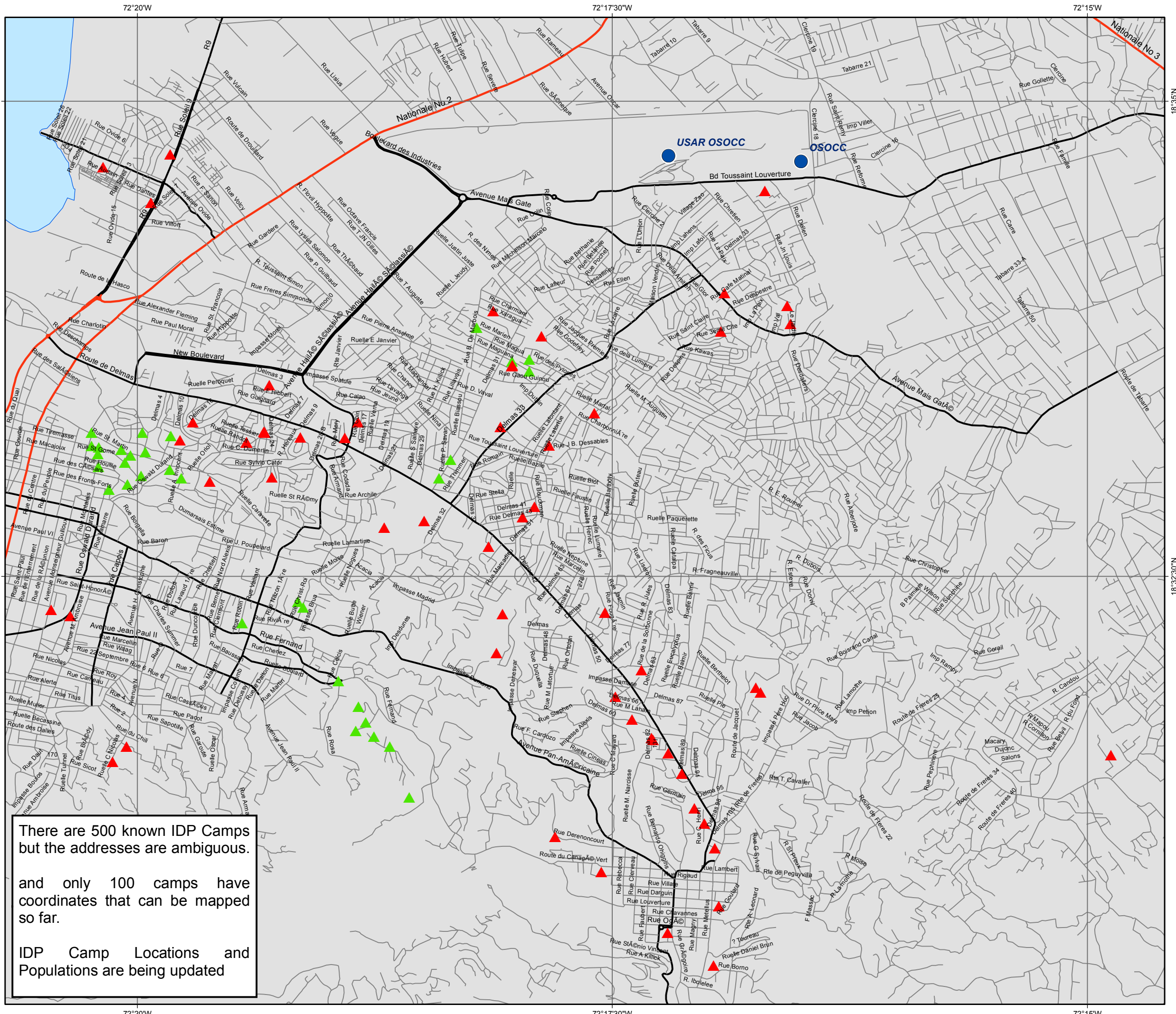
The depiction and use of boundaries, names and associated data shown here do not imply endorsement or acceptance by MapAction.

- UN Organisations
  - Camps located by government
  - Camps located by ground assessment 20th Jan
- Roads**
- Primary
  - Secondary
  - Departement

**Data sources:**  
Open Street Map, Haiti Government, CNGIS, Ground assessment motorcycle team, OSOCC

Produced by MapAction [www.mapaction.org](http://www.mapaction.org)  
[mapaction.haiti@gmail.com](mailto:mapaction.haiti@gmail.com)

MapAction is grateful for the support of DFID



There are 500 known IDP Camps but the addresses are ambiguous.

and only 100 camps have coordinates that can be mapped so far.

IDP Camp Locations and Populations are being updated